



Newerne Street, Lydney, GL15 5RF
£625 Per Month





26 Newerne Street

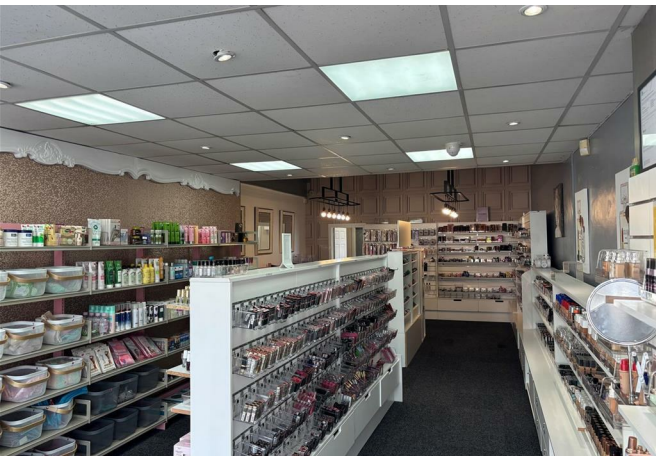
Lydney, GL15 5RF

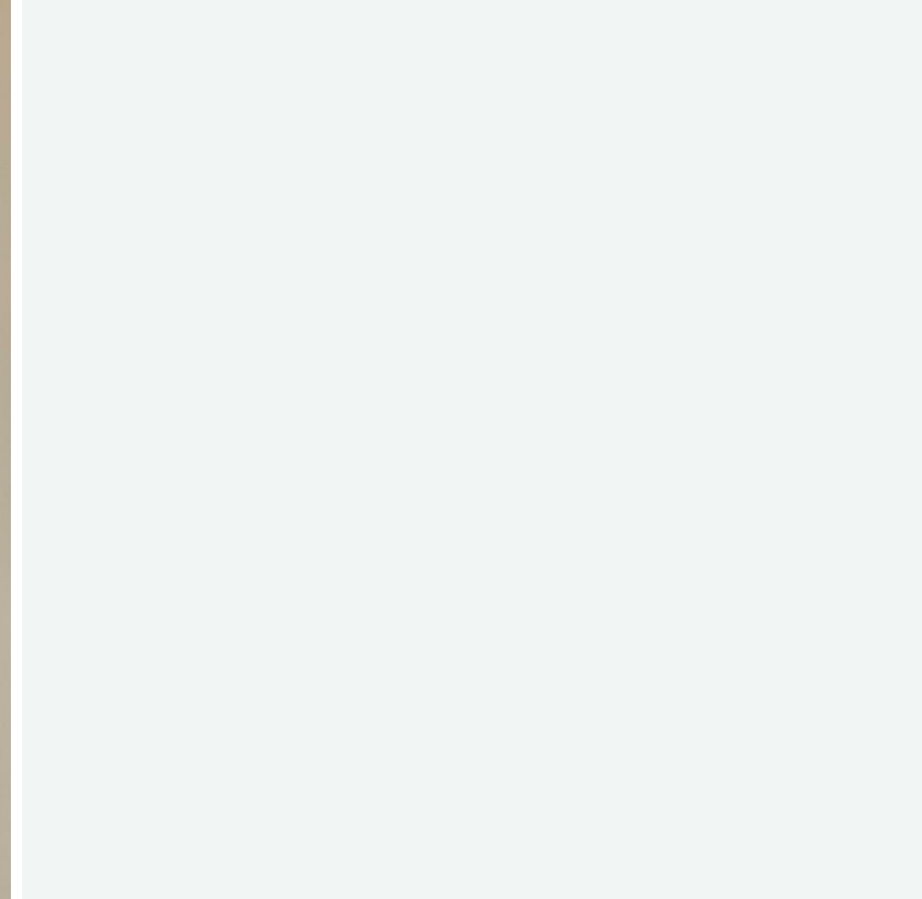
A well-positioned commercial premises located in the heart of Lydney town centre, benefiting from excellent visibility and footfall. The property is currently arranged as a retail unit, making it suitable for a variety of business uses (subject to any necessary consents).

The premises are offered at a rent of £625 per calendar month. The tenant will be responsible for insurance charges, estimated at approximately £500 per annum.

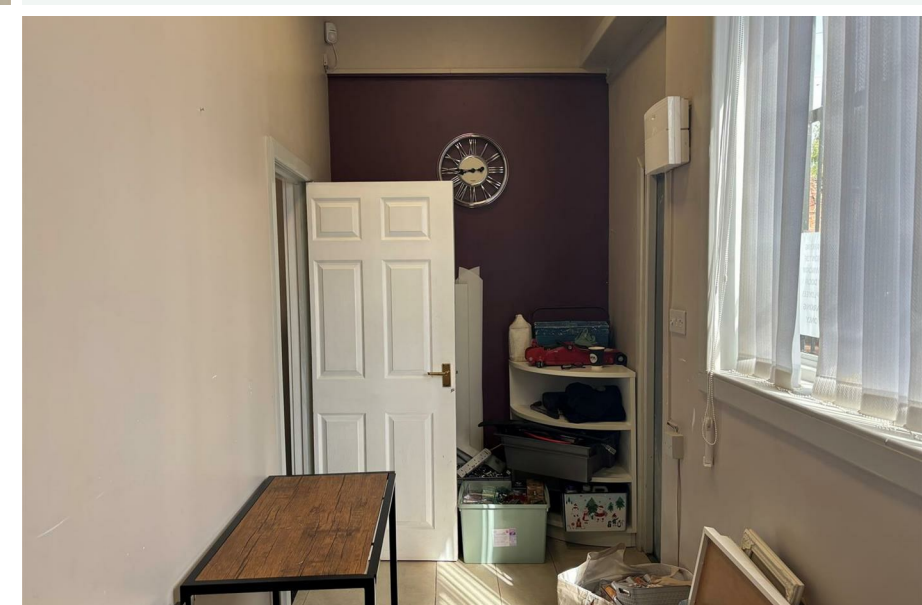
An excellent opportunity for businesses seeking a prominent town centre location with strong exposure.

£625 Per Month





Directions





WAKE-NIP

WAKE-NIP

fireStyles
STOVES
31594 738547
@firestylesuk

WAKE-NIP

WAKE-NIP
WAKE-NIP
WAKE-NIP

Reuse
Repea

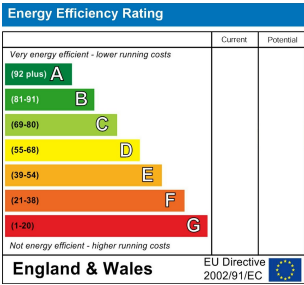
Floor Plans



Location Map



Energy Performance Graph



Viewing

Please contact our Coleford Office on 01594 835751 if you wish to arrange a viewing appointment for this property or require further information.

The particulars are set out as a general outline only for the guidance of intended purchasers or lessees, and do not constitute, any part of a contract. Nothing in these particulars shall be deemed to be a statement that the property is in good structural condition or otherwise nor that any of the services, appliances, equipment or facilities are in good working order. Purchasers should satisfy themselves of this prior to purchasing.

